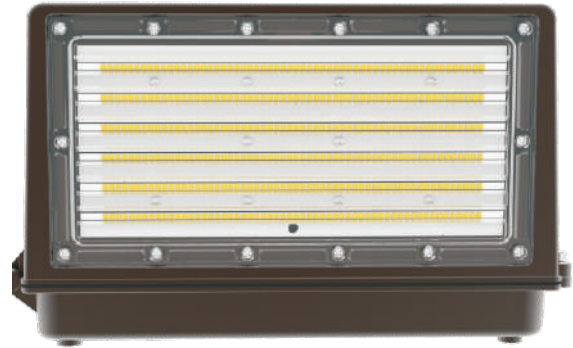
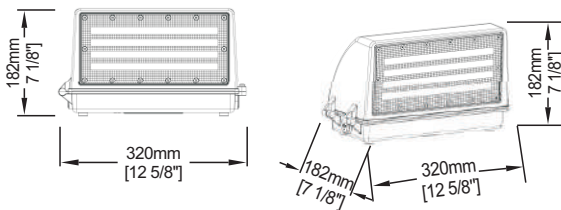


# WPAC Full Cut-off Series

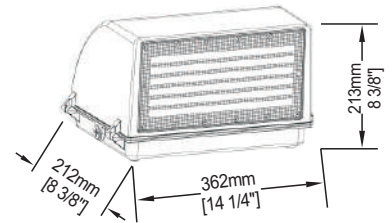
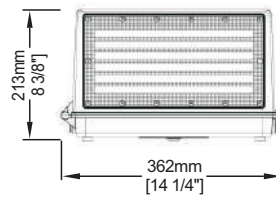
The WPAC LED wall packs deliver full cutoff light distribution. The full cutoff wall pack offers a popular but classic appearance with sleek angle design. Suitable for up to 10-25 foot mounting for applications including pathways, perimeter lighting and building entryways. Available in 35W,60W(small), 80W,100W,120W(large) with CCT 4000K & 5000K. LED wall pack fixtures can be mounted on surface/facade, whether you have a new construction or upgrade application. They are perfect for illuminating a variety of outdoor applications, including facade, wall washing, monuments, landscapes, public places, retail and residential complexes. They provide an added level of security to residential/commercial properties.



## DIMENSION:(mm/in)



**35-60W**



**80-120W**

# WPAC Full Cut-off Series

## CONSTRUCTION

- Die-cast aluminum housing, fully sealed to be dirt and bug proof
- Light transmission PC lens
- Integral secondary heat sink to optimize thermal transfer and maximize performance and life of LED
- Driver is mounted in direct contact with the casting for a low operating temperature and long life
- Polyester powder-coated finish, rust and corrosion proof
- Stabilized to extreme climate changes without cracking or peeling
- Brown (other Finish, please call us for quotation)

## APPLICATIONS

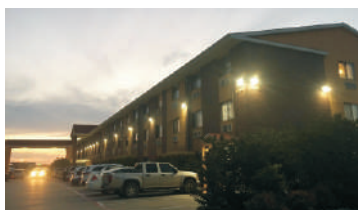
- Wet areas
- Outside walkways
- Farm buildings  
(Non-corrosive atmosphere)
- Garages
- Building lighting
- Packing lot lighting
- Entryway
- Storage warehouses
- Security lighting

## FEATURES

- ETL/cETL listed for wet and outdoor locations
- Light efficiency is reach to 120lm/W
- 120-277 input voltage is optional
- Photocell sensor is optional



Entryway lighting



Parking lot lighting



Dorways lighting



Building lighting

## PRODUCT DETAILS



Integrated level inside the housing to facilitate installation



Built-in photocell sensor



Full Cutoff structure directs the light downward

# WPAC Full Cut-off Series

## TECHNICAL SPECIFICATION

- Input Voltage : 100-277VAC
- Driver Type : High performance LED drive.
- Power factor : >99%, THD <15 %
- Luminous Efficacy : up to 120lm/w
- Colour Rendering Index : > 70Ra
- LED Type : High performance LM80 SMD3030 LED
- Operating Temperature : -30°C up to 50°C(-22°F up to 122°F)
- Color Temperature : 4000K/5000K
- Material : Aluminum Housing & PC Lens
- Ingress Protection : IP65
- Impact Rating : IK08
- Rated Life : 50,000 hours
- Warranty : 5 years

### Models

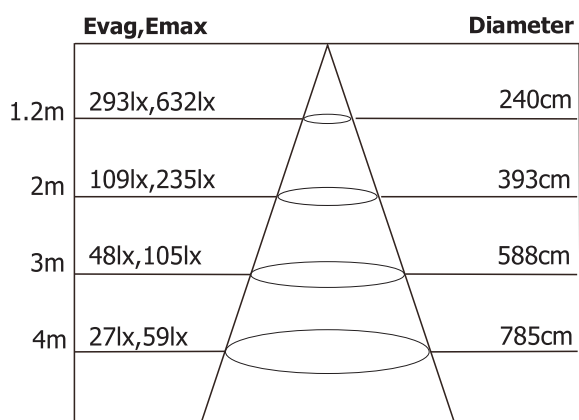
For example (KLWPAC035-50KFP)

Family	Wattage	Separator	CCT	Angle	Driver Type
<b>KLWPAC:</b> KILI-LED PC Lens LED Wall pack (100-277VAC)	035:35W 060:60W 080:80W 100:100W 120:120W	—	30K:3000K 40K:4000K 50K:5000K	C: Full-cut off	S:Non-dim ming

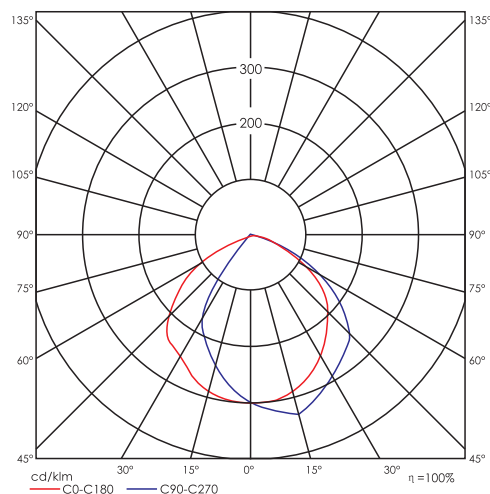
Produce Code	KLWPAC035	KLWPAC060	KLWPAC080	KLWPAC100	KLWPAC120
<b>Power Consumption(W)</b>	35W	60W	80W	100W	120W
<b>Lumens Delivered (lm)</b>	4200lm	7200lm	9600lm	12000lm	14400lm
<b>Efficacy (lm/W)</b>	120lm/w	120lm/w	120lm/w	120lm/w	120lm/w
<b>CRI</b>	70	70	70	70	70
<b>Color Temperature</b>	4000K/5000K	4000K/5000K	4000K/5000K	4000K/5000K	4000K/5000K
<b>Power Factor</b>	0.95	0.95	0.95	0.95	0.95
<b>Housing</b>	Die-cast aluminum body(Bronze/Black). PC Lens	Die-cast aluminum body(Bronze/Black). PC Lens	Die-cast aluminum body(Bronze/Black). PC Lens	Die-cast aluminum body(Bronze/Black). PC Lens	Die-cast aluminum body(Bronze/Black). PC Lens
<b>Input Voltage</b>	100-277VAC	100-277VAC	100-277VAC	100-277VAC	100-277VAC
<b>Installation</b>	Recessed outlet box or wall surface	Recessed outlet box or wall surface	Recessed outlet box or wall surface	Recessed outlet box or wall surface	Recessed outlet box or wall surface
<b>Operating Temperature</b>	-30°C up to 50°C (-40°F up to 122°F)	-30°C up to 50°C (-40°F up to 122°F)	-30°C up to 50°C (-40°F up to 122°F)	-30°C up to 50°C (-40°F up to 122°F)	-30°C up to 50°C (-40°F up to 122°F)
<b>Certification</b>	ETL/cETL	ETL/cETL	ETL/cETL	ETL/cETL	ETL/cETL
<b>Warranty</b>	5 years	5 years	5 years	5 years	5 years

## LUMINAIRE PHOTOMETRIC

### Cone illuminance Diagram:

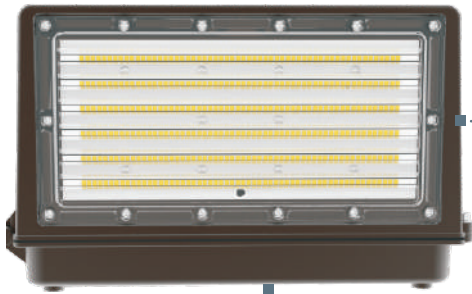


### Luminous Intensity Distribution Diagram:



# WPAC Full Cut-off Series

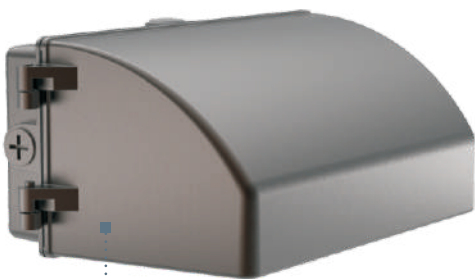
Wall pack lights sales champion,  
quality is better than peers.



**High efficient SMD LED chips** with 100000hrs lifespans, and waterproof rubber ring design.



**Photocell Dusk to Dawn Sensor**  
Photocell light control sensor, motion sensor are available, which would provide better energy saving solution.



**Heat Dissipation** With a die cast aluminum housing and a polycarbonate lens, Internal heatsink design, for good heat dissipation and be elegant.

**Fixtures and electrical components are UL certified to USA and Canada standards;**

- IP65 rated and suitable for wet locations
- Heavy-duty cast aluminum housing surface mounting with junction box
- 5 years warranty

# WPAC Full Cut-off Series

## PACKAGING

Model No.	Qty (pcs)	L*W*H (CM)	NW. (kgs)	G.W. (kgs)	Meas. (CBM)
			Per CTN	Per CTN	Per CTN
WPAC035 WPAC060	1	34*17*23CM	2.7	3.2	0.01
WPAC080 WPAC100 WPAC120	1	38*28*26CM	4.9	5.5	0.03